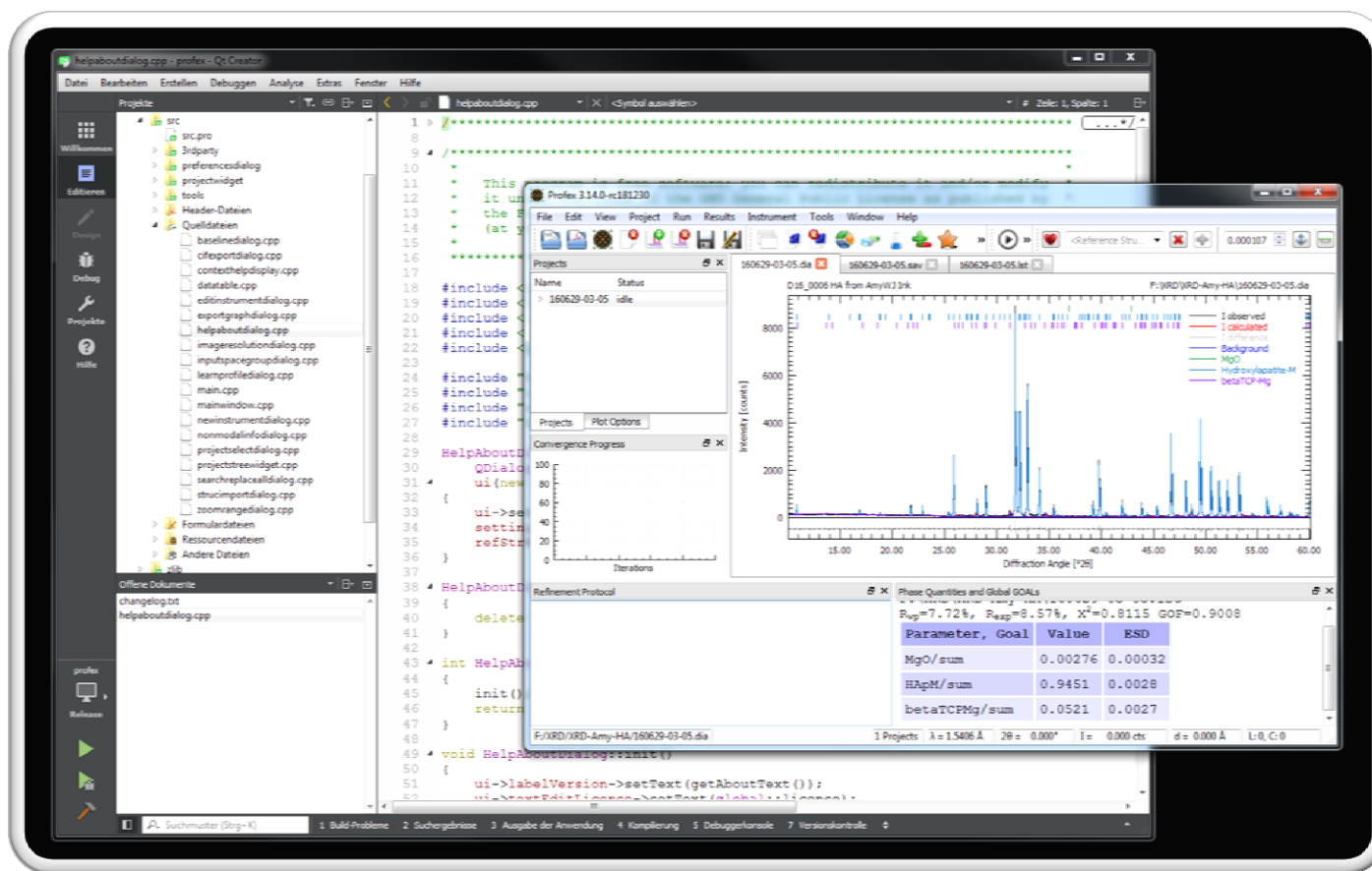
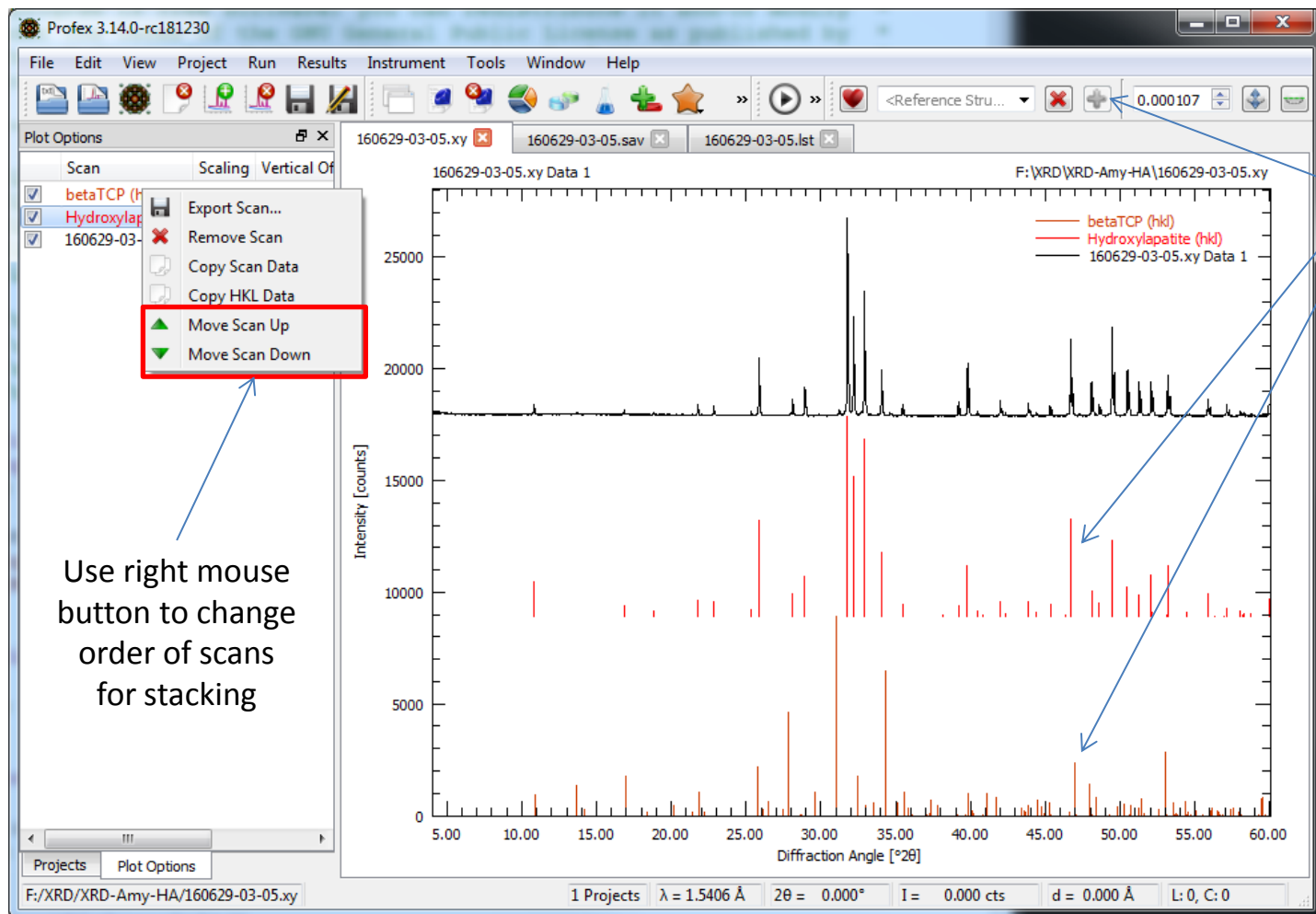


New features in Profex 3.14



PROFEX

OPEN SOURCE XRD AND RIETVELD REFINEMENT

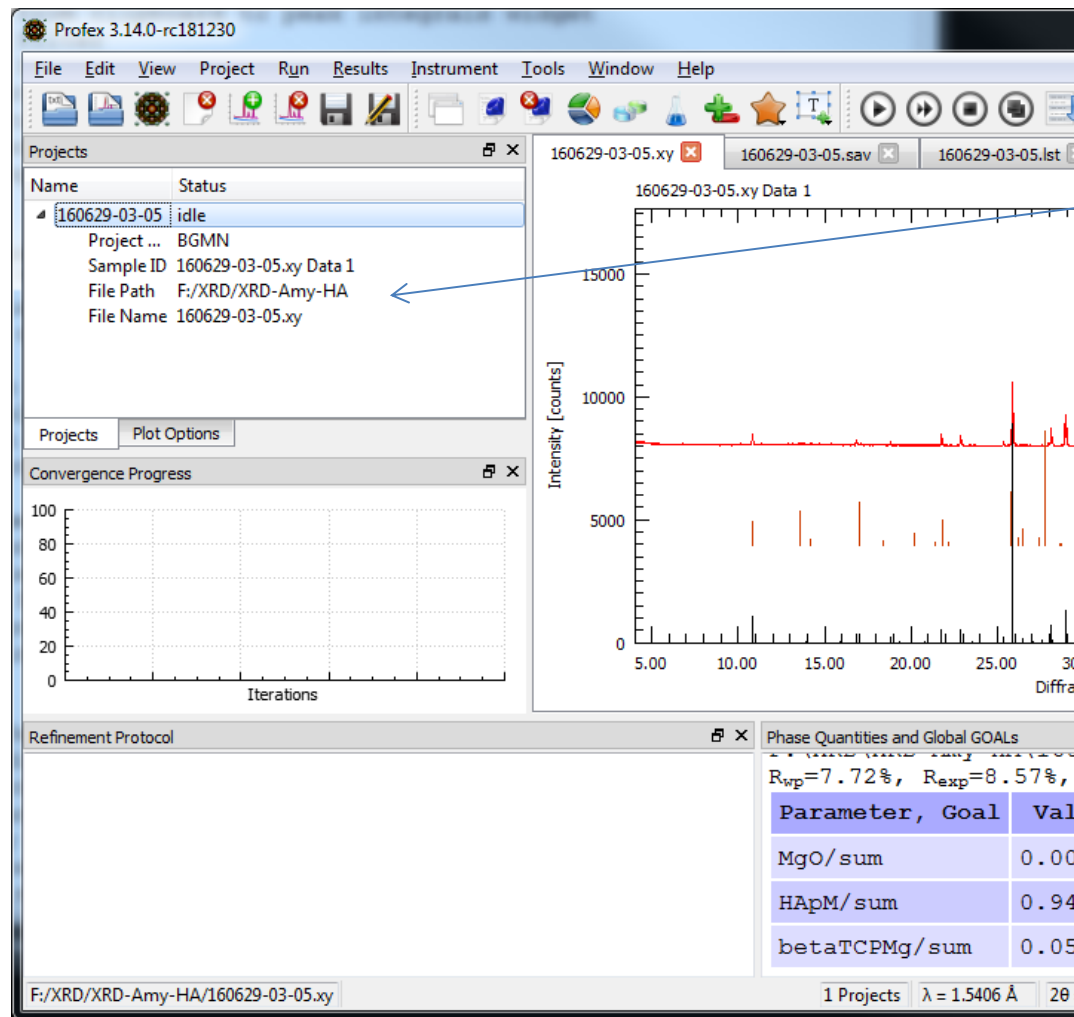


Use right mouse button to change order of scans for stacking

Permanently add hkl lines to plots

PROFEX

OPEN SOURCE XRD AND RIETVELD REFINEMENT

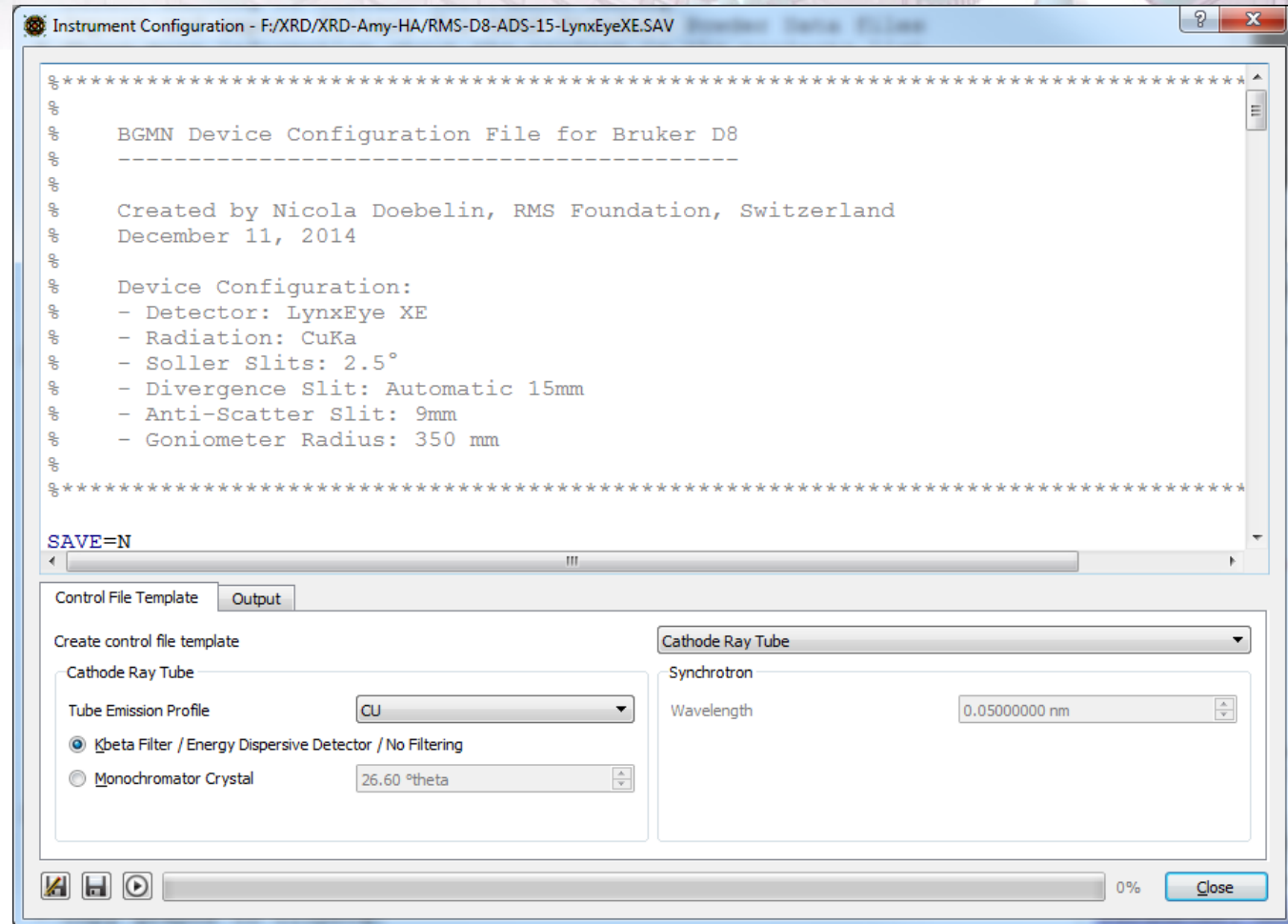


More file information in projects list

PROFEX

OPEN SOURCE XRD AND RIETVELD REFINEMENT

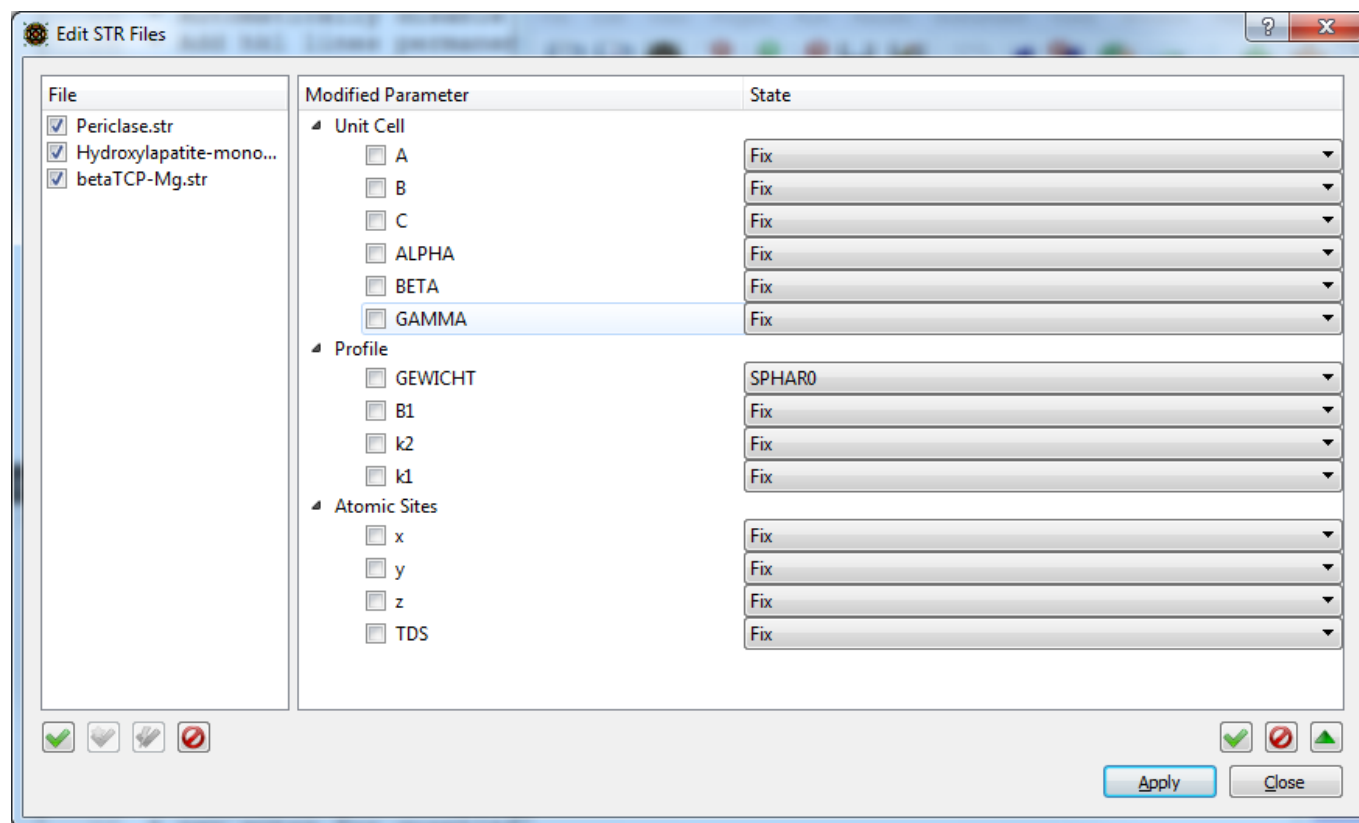
Improved „Edit
Instrument“ dialog



+ direct access to current tinstrument file („Instrument → Edit current FPA configuration“)

PROFEX

OPEN SOURCE XRD AND RIETVELD REFINEMENT

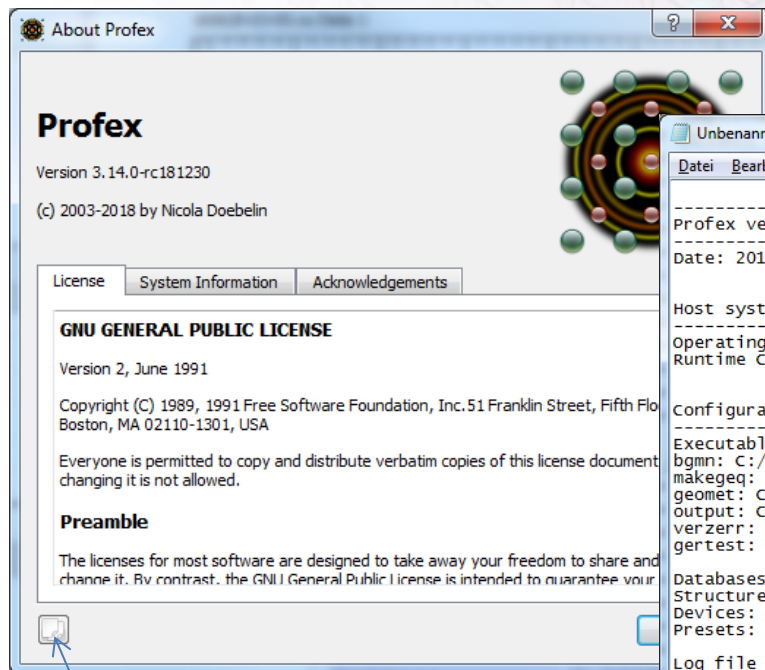


New dialog to batch-edit all STR files in a project

„Project → Edit all project STR files“

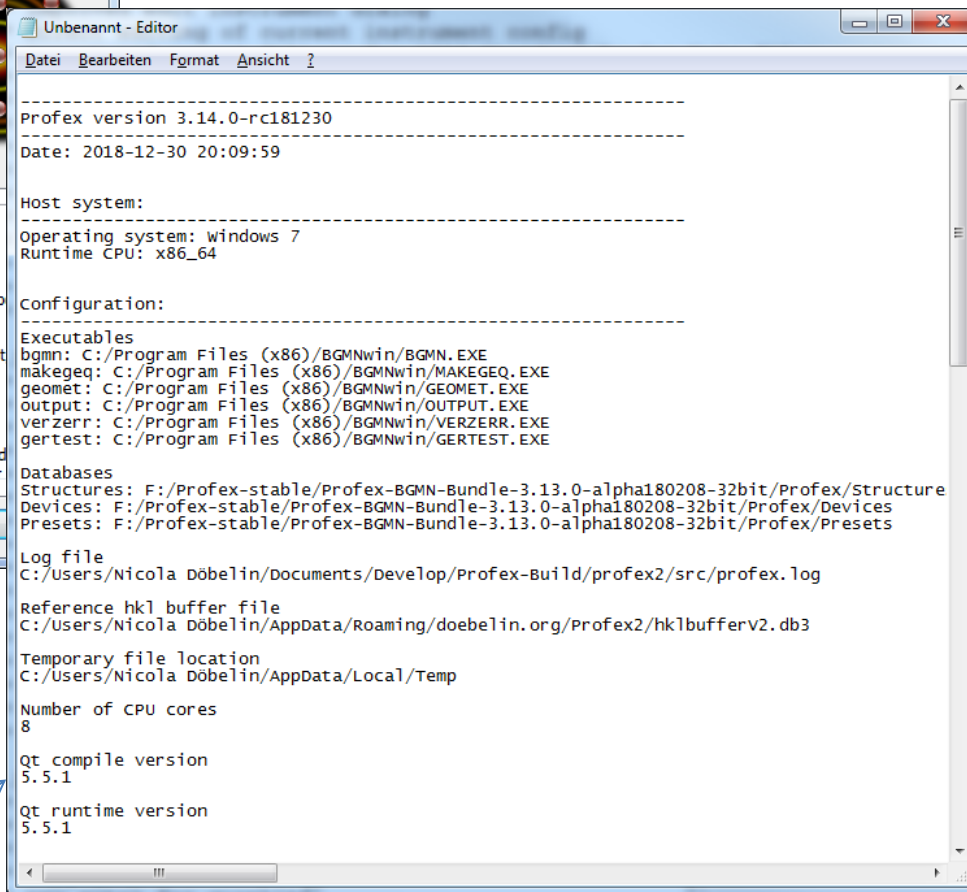
PROFEX

OPEN SOURCE XRD AND RIETVELD REFINEMENT



Copy system
information to
clipboard

Paste to editor
or e-mail



...useful for support requests



+ many more improvements:

- Hold Ctrl-key when dropping scans inserts the scans in the current project
- Automatically disable favourites filter when no favourites are defined
- Improved Grace graph export filter
- Paste integral ranges from clipboard to peak integral window
- Location of hkl buffer file and temporary directory can be customized
- Structure indexing is now available from Tools menu
- Opening project backups works accross Mac/Linux/Windows platforms
- Import and export filters for GSAS standard powder data files
- Double-click on file tabs synchronizes file tabs in all projects
- Customizable limits for B1, k2 and TDS in preferences dialog
- Various bug fixes

